

Pin striping the Model A – An Alternative Method

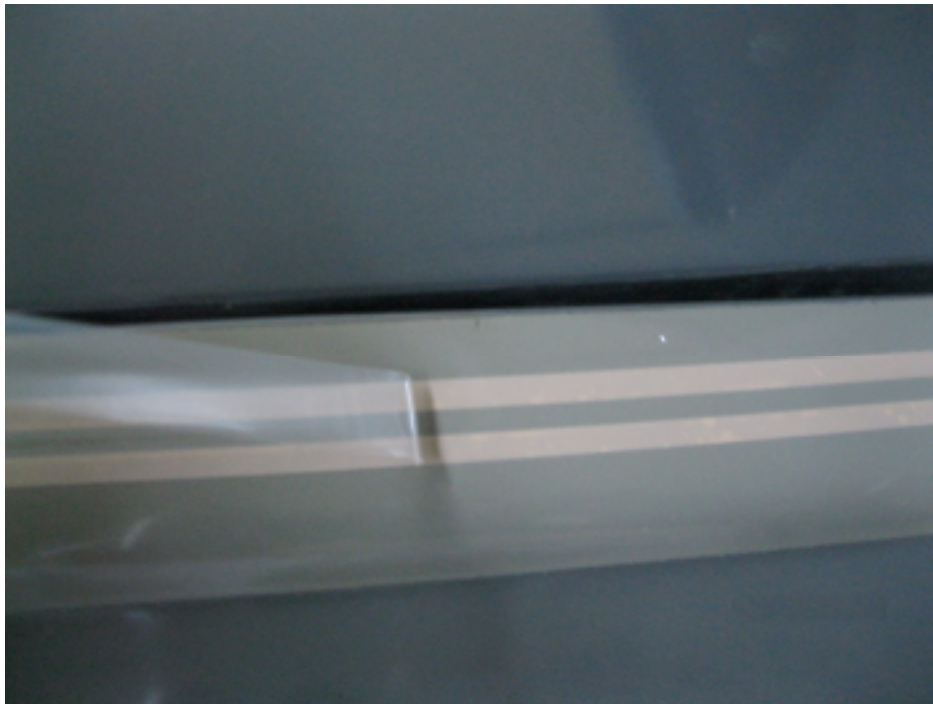
Submitted by: William “Bill” Brum, Raynham, Massachusetts

Pin stripes are essential features to bring you're “A” back to an authentic look. However, pin striping has always been considered a task that is best left to an expert. For the novice who does not pin stripe for a living, this can be a daunting task. That being said, there is an alternative method which can provide very good results on your 1st attempt.

Pin striping tape can be purchased which will allow a novice to apply a painted pin stripe which replicates the original dimension and style. The tape is applied to the contour of the Model A body prior to applying paint. Pin striping contours for your body style can be found in the MAFCA Paint & Finish Guide.

Once the tape is applied to your satisfaction, the 1/8” wide center strip is peeled off to expose the painting surface. This surface should be cleaned with a solution such as isopropyl alcohol or similar metal prep to remove any wax or grime from the surface. The solution should be wiped off immediately after application as not to leave a residue. Once the surface is prepped, it is time to apply paint.

One traditional pin striping tool essential to the process is the pin striping sword brush. For the 1/8” wide dimension, I have found the #0 brush will fit the task. These brushes are designed to absorb sufficient amounts of paint along their length to provide long, uninterrupted brush strokes. Once paint is applied to a portion of the body (hood, door, etc), the tape should be removed immediately to create a clean, thin, edge. Shown below is the center stripe tape being pulled back and exposing the area to be painted.



[Ed Note: the striping tape can be obtained from many automotive paint stores.]

