



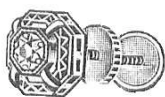







Accessories of the Model A Era as sold in Sears Catalogs 1928 through 1931

By Judy Lewis

For the most part jewelry, watches, camera's, belts and buckles changed very little during the era. Many of these items are also in the Fashion Guidelines and the Book of Fashion Facts.

Earrings are rather easily dated; the earliest were lightweight gold and were made with wire hooks which went through pierced ear lobes and screw-backs. Clip earrings were not sold during the era.

- | | | | |
|--|---|---|---|
| | A | B | C |
| A. Earrings for pierced ears in 10 karat solid yellow gold with ruby red color set. |  |  |  |
| B. This earring looks like an earring you could find today and any department or drug store. It was made of 10 karat solid gold. | | | |
| C. Sears just sold this as an earring for pierced ears. | | | |
| | | D | |
| D. 18 karat gold stud earrings with fine diamonds were sold with ear screws. |  |  | |
| | E | F | G |
| E. Gold plated with a roman finish. (matte finish) in colors of rose, cherry red, jade green or sapphire. |  |  |  |
| F. Silver plated with imitation diamonds. | | | |
| G. Gold filled bright polished loops with a pearl knob. | | | |
| H. Silver plated with imitation diamonds. | | | |
| I. Gold filled button earring. | H | I | |
| |  |  | |

All the earrings on this page were in the Sears catalogs for all 4 years of the Era. 1928 through 1931.

Accessories (continued)

Necklaces were worn by all age groups of females. They sold jewelry for babies, young girls to age 12. I found no jewelry, including watches, for young boys.

Genuine crystal necklace and earrings. The set on the left are clear cut were in all for years of the Era.

The set on the right are called the new jap cut and have a rondelle between each bead. This cut was 1st seen in Sears catalog F/W 1931 - 32



5 strand pearl necklace with the shortest strand at 15" and the longest strand at 20". Uniform size beads with solid silver filigree clasp.



Senorita double strand twisted pearl necklace with very small and dainty seed pearls. "B" luster. The festoon is set with fine imitation diamonds and blue color sapphire. 10 karat white gold clasp. Length about 15 inches.

Children's Locket

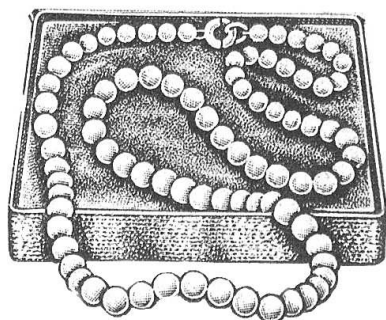
Left – Heart shaped pendant with colored stone. Silver. 13 ½" long. Rose, Amethyst, sapphire or aquamarine.

Center – 10 karat natural color gold. 14" long.

Right – 10 karat silver with natural rose diamond.



Accessories (continued)



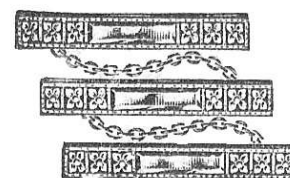
Gifts for Baby

10 karat solid gold clasp with indestructible dainty pearls. Length 12”.



Birthday set for Little Miss up to 12

Ring, pendant and chain in 10 karat white gold. Choice of ruby, sapphire blue or amethyst.



Right Column – Babies Bracelets

Top – White gold filled flexible bracelet with indestructible pearls and colored beads.

Center – Gold filled with bright polish.

Bottom – 10 karat white gold about 1 1/2” diameter.

Center Column – Rings for Girls up to 12

Left – 10 karat solid white gold with topaz, sapphire blue or ruby colored stone.

Center – 10 karat solid white gold. Yellow gold ornamentation. Ruby, sapphire or amethyst stone.

Right - 10 karat solid white gold with aquamarine, ruby or sapphire stone.

Left Column – Babies Pins

Babies pin set, yellow gold filled, bright polish. Soldered link connection.

Accessories (continued)



Left Column – Vanity Cases
 Vanity cases usually contained powder, rouge, two puffs and a mirror. Some also contained a lipstick or comb. Measuring 1 ¾ “ to 2” square or 3” long. They had a carrying chain.

Right Column – Ladies Bracelets
 Starting at the top.

Solid silver flexible bracelet, imitation diamond, ruby, sapphire or amethyst color stones.

Solid silver initial bracelet with openwork links.

Solid silver flexible bracelet with a choice of imitation diamonds and colored stones.

Same as above, just different style. Both bracelets have clasps.

Silver link bracelet with openwork pattern. Sapphire or ruby sets.

Solid silver slave bracelet in jade or cherry red.

Ladies silver plated slave bracelet with ruby, sapphire or amethyst stone sets.

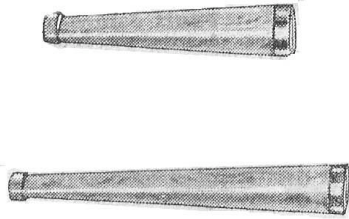
Ladies silver plated bracelet. Jade green, cherry red or lapis (dark red) color sets.

Ladies indestructible pearl bracelet with spiral effect winds.

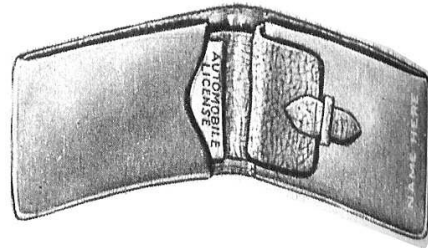
Gold filled bracelet with bright polish.



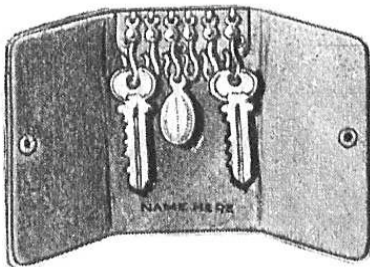
Accessories (continued)



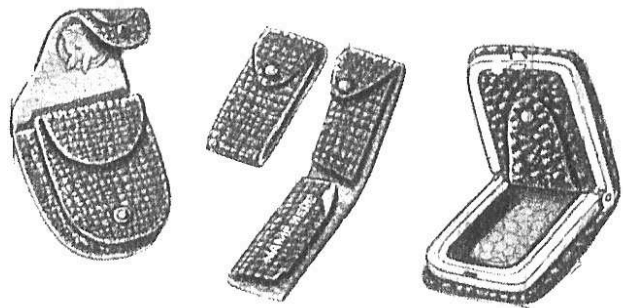
Cigarette Holders
 Top – Pure amber with 1/16th gold band. 2” long.
 Bottom – Ladies pure amber cigarette holder with 1/16th gold band. 3” long.
 In 1928 Sears advertised a 5 3/4” holder.



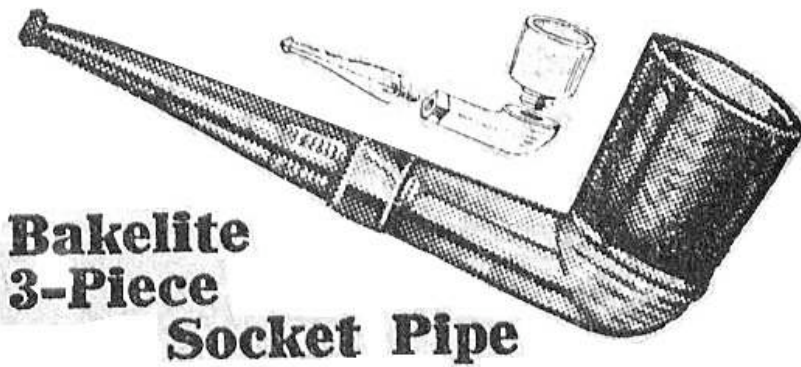
Light tan pigskin ladies wallet made especially for the new size currency. Closed size is 3 1/4 by 4 1/2”. Sears F/W 29-30.
 In 1928 a similar wallet was 3 3/4 by 5”. I did not realize that the treasury changed the size of bills.



Key Caddy and Auto license carrier made from genuine cowhide. Patented swivel hooks turn in all directions.



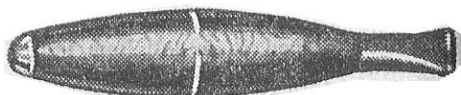
Left – Don head design coin purse made of cowhide. Folds thin.
 Center – Combination coin and bill of narrow design to hold both old and new currency.
 Right – Combination coin and bill holder with nickel plated frame.



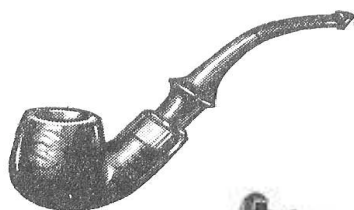
**Bakelite
 3-Piece
 Socket Pipe**

The pipe length is 5 1/2”. The screw bowl is made to resemble briar while base and tasteless month piece looks like clear amber. Gold plated band. Full size bowl. Easily taken apart for cleaning. This pipe is in the Sears catalogs for 1928, 1929, 1930 and 1931.

Accessories (continued)



Cigar Shape Pipe



Above – This safety pipe is ideal for outdoors. It is all Bakelite and 5” long.

Center – Chesterfield pipe with a French briar bowl And a black hard rubber mouthpiece.

Right – 1st lighter is a Press it wind proof lighter with leather covering and silver plated trim.
Right – 2nd lighter is a Evans automatic lighter with lifetime finish.

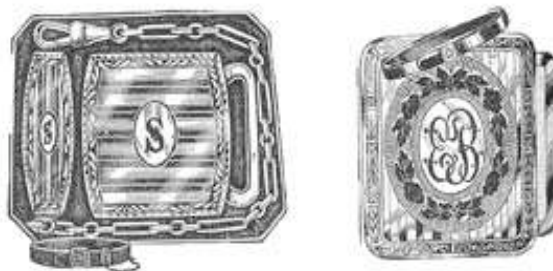


Cufflinks above on the left are green gold hinge style and on the right are snap on turn style. Solid gold front and white gold filled.



I thought the pocket watches above right were very unusual, designed to commemorate the exploits of two famous Americans. The design was patented by Sears.

1. They would run for 30 hours with 1 winding.
2. Genuine un-breakable crystals.
3. Reliable compass on fobs.
4. Made in America.



Belt buckles and belts:

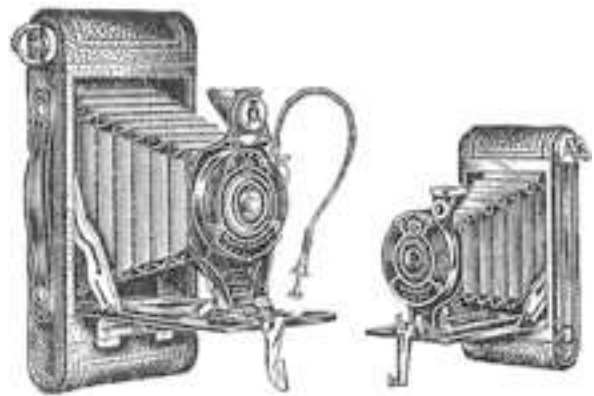
All four styles came with belts ranging in size from 1” to 1 3/8” wide. Belts came in black or tan. The buckles were either silver or green gold filled. The styles all had a place for initials.



Accessories (continued)

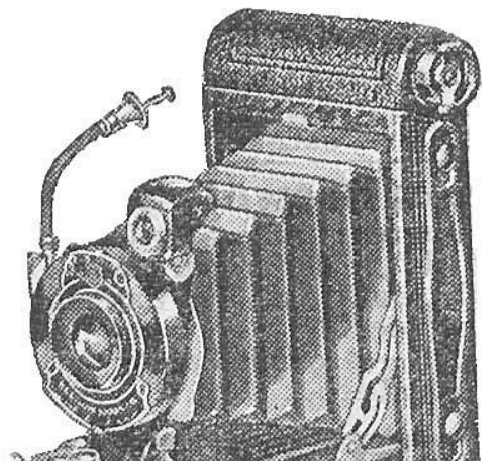
The cameras on the top right are Hawkeye Cameras made by Eastman Kodak. The cameras are covered with fine grain black imitation leather. The smaller camera is a folding camera.

These two were in Sears SS 1928.



The Hawkeye Camera (center right) is from Sears SS 1931 and there was very little change.

There was a folding camera in this year's catalog also.



This is the well known Brownie Camera. It was simple to operate and had two shutter speeds, instantaneous and time. Made by Eastman-Kodak.

This style was advertised in all 4 years from 1928 to 1931.

