

TRAVELING DOWN



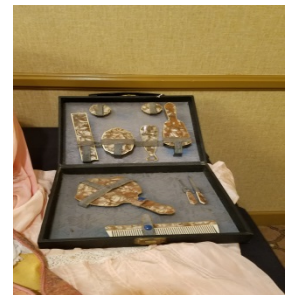
IN YOUR MODEL A



Those attending the National Banquet had the opportunity to attend a Fashion seminar presented by Patti Jones, Era Fashion Committee member.



Traveling down Route 66, bags would be unpacked and guest(s) settled into comfortable rooms at the Morey Mansion in Redlands, California. A woman would travel with a full dresser set to ensure a glamorous appearance.



The well-dressed woman might change into an afternoon dress for a stroll around the property. In a black and white checked dress with white insert and shoes of kid leather in a white and black woven pattern, she would marvel at the beauty of the grounds.

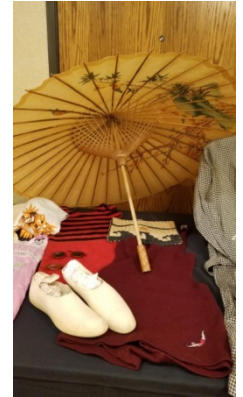
For a sports minded woman, riding or shooting clay birds would be on the agenda.



Tall leather boots kept the person stable and the canvas vest would hold the shotgun shells needed.

For the ride through the countryside, a spring outfit with plaid knickers with a cream-colored long sleeved blouse would add style to the sport. Of course, a black riding helmet and a riding whip would be appropriate accessories.

Palm Springs was a popular stop along Route 66. Perhaps a dip in a swimming pool or catching some sunrays in the newest swimwear would occupy the time. An umbrella, rubber shoes to protect the feet and the ever so fashionable Janzen swim suite made of wool would have been unpacked from the luggage.



For the adventure seeker, taking a flight would require goggles, leather helmet, gloves, and a jacket.

Golfing attire might be the corduroy knickers, white shirt/blouse, sweater, and leather shoes with knee high stocks.

Perhaps instead of walking or sports, attending an afternoon tea would provide a delightful afternoon. The orange floral chiffon dress with a Bertha collar, hat, and cream leather pumps would turn all the heads as you enter the tearoom.

hat, and cream leather pumps would turn all the heads as you enter the tearoom.

As evening approaches, an evening dress for dinner was necessary. The aqua dress with embroidery edges, chiffon jacket, and silver fox stole, pale blue evening sandals, and white beaded purse would be perfect. This ensemble could also be worn at the casinos for an evening of cards and gambling.



To retire for the evening, a silk nightgown with a matching dressing gown could be worn around the bedroom suite. Another choice could be a black oriental design lounging pajamas. The striped beach pajamas with a jacket would be worn around the pool or patio with the black brimmed hat and beige shoes.

Being well attired required planning, multiple ensembles, and an attitude of style for travelers along Route 66 or across the entire country!

At the National Banquet Fashion seminar, several fashion enthusiasts spoke of being discouraged due to difficulty of finding original garments in good condition. Some are reporting that their original garments no longer fit their body shapes, or their garments are becoming so fragile, that they chose not the wear them in fashion judging. . Original garments are 89-92 years old, however just as beautiful as the day produced. The Era Fashion Committee is discussing the concept of a Judged Display Section of the Era Fashion Guidelines. Currently, there is a Display Only description, where a Host Fashion Coordinator may decide to offer a Display opportunity to participants. The Era Fashion Committee believes there are MAFCA members who would display the original garments for all to enjoy.

The Era Fashion Committee has started drafting proposed judging standards for Display Fashion Category. The Era Fashion Committee would like your feedback. Send your comments to Diann Eason, Chairperson at fashions@mafca.com

#####