

The Color of Fashions in Your Model A World

Color Dictionary and Color Table

By Peggy Gill

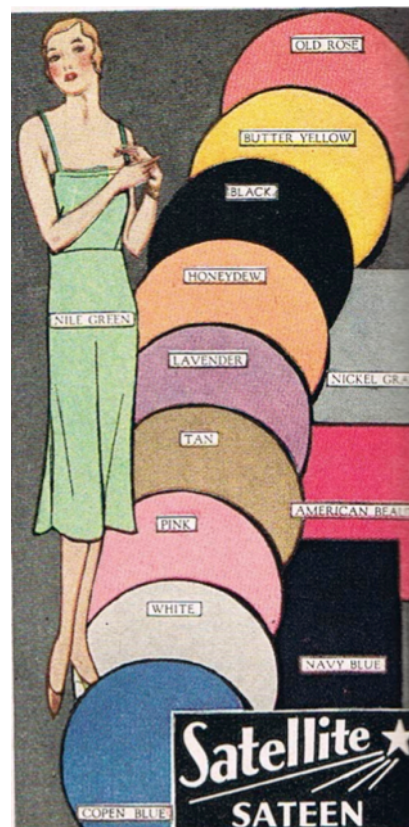
A number of years ago, one of our fashion friends from Texas queried MAFCA's Era Fashion Committee about the colors that would be appropriate for a young woman, specifically a teen, in the Model A Era to wear. At that time, we had no definite answer to give, as those of us on the EFC at the time could not find specific documentation. The topic was put on the back burner, but I made a note to clarify the color question for all women's fashions at a later time.

My research and compilation led to some interesting findings when it comes to the question of colors in fashion during the Model A era. Was I able to answer the initial question about the teen from Texas? I am not sure, but the project resulted in a lengthy thirteen-page article that included a "color dictionary" and cross-referenced color table. However due to space limitations for publication in *The Restorer*, it was decided to publish the background and history in the magazine (May/June 2020), and directing readers to MAFCA's website for the color dictionary and color table.

The Birth of the Color Dictionary:

Due to the prevalence of mail order shopping, color descriptions for consumer goods became more and more important to the consumer. *Sears, Roebuck and Co.*, one of the largest distributors of apparel and textiles during the Model A era decided to take the lead in correcting the "color problem" by standardizing and simplifying color names for their customers. According to information found in their *Spring and Summer 1931 Catalog*, a number of years before this same catalog was published the company had appointed a "Color Committee" to "establish standard colors" and provide "intelligent descriptions" for those colors. Furthermore, they made the decision to provide the standard name in parenthesis for their descriptions used in their catalogs along with another popular name. For example, the description might read, "Pistachio (light green)." The Color Committee developed two separate color lists: one for the colors used to describe clothing, underwear, and textiles and another for the colors used to describe footwear, hosiery, and "wearing apparel" accessories. Their rationale was that the colors for shoes, hosiery and accessories were often used as a means of contrast in the ensemble; therefore, the color names should be different.

The Following lists are for informational purposes only, and are taken from *Sears, Roebuck and Co.*, Catalog No.162, Spring and Summer 1931. It is a list that could be used when looking at fabric and apparel descriptions in their catalogs. Many of these same names are found throughout the 1928, 1929, and 1930 catalogs describing fashion items.



COLORS USED IN DESCRIBING CLOTHING, UNDERWEAR, AND TEXTILES

Admiralty—new dark Navy Blue

Alice Blue—pale grayish blue

Almond—light grayish green (same as Pistachio; Gooseberry Green)

Amber—medium golden brown

American Beauty—medium dark red with a slight purple cast

Amethyst—medium grayish violet

Antique Gold—deep orange yellow

Apple Green—medium light yellow green (same as Pastoral Green)

Apricot—very pale pink orange

Aqua Green—pale green; slight blue cast

Autumn Brown—dark brown

Baby Blue—pale blue

Baby Pink—very light pink

Basque Blue—medium light grayish blue (same as Copenhagen; Gobelin)

Beach Sand—light beige (Beige Claire)

Beige—light tan with gray cast (same as Sea Sand)

Beige Claire—light beige (same as Beach Sand)

Bermuda—light bluish green

Billiard Green—bright green

Blossom Pink—light grayish pink

Bluebird—bright blue

Blue-de-Lyon—medium bright blue

Blue-Gray—gray with a bluish cast

Blue Heather—blue predominates with other contrasting colors mixed in

Blue Turquoise—light greenish blue

Bottle Green—medium dark green (same as Meadow Green)

Brittany Blue—light blue

Bronze—dark greenish yellow

Brown Heather—brown predominates with other contrasting colors mixed in

Brush Brown—medium brown

Buff—medium tan, yellowish cast

Burma Tan—dark beige (same as Deer Tan)

Burnt Orange—orange; light brown cast

Butler Yellow—pure yellow

Cadet Blue—medium grayish blue

Camel—light grayish tan

Canary—pale yellow

Cardinal—medium red

Castilian Red—very bright red

Challenge Blue—medium bright blue

Chamois—light clear tan

Champagne—light pinkish beige

Cheny—light red with blue cast

Chestnut Tan—medium brown

Chocolate—rich dark brown

Chukker—medium bluish green (same as Spruce Green)

Cocoa—light brown of orange cast

Copenhagen—medium light grayish blue (same as Basque Blue; Gobelin)

Coral—deep orange pink

Corn—light yellow (same as Maize)

Crab Apple—pink orange

Cream—white with slight yellow cast

Cricket—dark green (same as Jungle Green)

Dale Green—light bluish green

Deer Tan—dark beige (same as Burma Tan)

Delft Blue—medium grayish blue

Drab—dark shade of grayish brown

Ecru—light beige

Eggshell—very light pinkish cream

Emerald—bright green

English Green—pure dark green

Fallow Tan—medium dark tan

Firebrand—bright orange red

Flame—bright orange red

Flesh—very pale pink

Flesh Tint—very pale orange pink

Forest—medium dark green; olive cast

Fraise—deep rose (same as Strawberry)

French Beige—medium tan with rose cast (same as Rose Beige; Rose Nude)

French Blue—medium blue

Garland Green—medium light green

Gascon—medium dark grayish blue

Gobelin—medium light grayish blue (same as Copenhagen; Basque Blue)

Gold—yellow with olive cast

Golden Brown—medium brown, gold cast

Gooseberry Green—light grayish green (same as Pistachio; Almond)

Guardsman—new medium Navy Blue

Harding—light blue (same as Brittany)

Havana—very dark golden brown (same as Tobacco Brown; Hula Brown)

Heliotrope—light lavender

Honeydew—pale pink orange

Hong Kong Khaki—medium tan

Hula Brown—very dark golden brown (same as Tobacco Brown; Havana)

Hunter Green—medium green

Hyacinth—light violet

Hyacinth Blue—light blue; lavender cast

Imperial—bright purple blue

Indigo Blue—dark blue

Ivory—very light yellowish white

Jade—light green

Jockey—bright red; slight blue cast

Jungle Green—dark green (same as Cricket)

Kelly Green—bright green

Khaki—greenish brown

Krimmer Gray—medium gray

Lavender—pale violet

Leaf Green—light grayish green

Leafmold—medium dark brown

Leather Brown—pure brown

Leghorn—pale yellow

Lilac—medium light violet

Linen Blue—light grayish blue (same as Queen Blue; Lucerne)

Lipstick Red—deep bright red

Lucerne—light grayish blue (same as Queen Blue; Linen Blue)

Maize—light yellow (same as Corn)

Marine Blue—light navy

Maroon—very dark red

Marron Glace—light brown; rose cast

Meadow—medium dark green (same as Bottle Green)

Middy Blue—medium bright blue

Mode—medium shade of tan

Naples Blue—deep lavender blue

Natural—cream color

Natural Baku Color—tan

Natural Beige—medium light grayish tan

Natural Cream—color of cream

Natural Leghorn—pale yellow

Natural Sand—light tan; gray cast

Natural Straw—tan

Natural Tan—light tan

Navy—dark blue

Nickel—pure gray

Nile Green—pale green

Noisette—medium brown

Normandie—dark Copenhagen blue

Nutria Tan—medium grayish tan

Oakwood—medium brown

Old Gold—dull gold color

Old Rose—deep pink; grayish cast

Olive Brown—medium brown with slight yellow cast (same as Waikiki)

Olive Drab—U.S. Army olive drab

Olive Tan—tan with olive green cast

Orchid—pale pinkish violet

Oxford Gray—very dark gray

Oyster—very light gray

Paprika—red orange (same as Tomato)

Pastoral Green—medium light yellow green (same as Apple Green)

Peach—pale orange pink

Peacock Blue—bright greenish blue

Pearl—pale gray

Piecrust Tan—golden tan

Pistachio—light grayish green (same as Gooseberry Green; Almond)

Platinum—light gray, color of metal

Polo Tan—grayish tan

Pongee Color—light tan

Popcorn—light clear yellow

Poppy—red of poppies

Powder Blue—light grayish blue

Queen Blue—light grayish blue (same as Linen Blue; Lucerne)

Reseda Green—medium gray green

Rose—deep pink

Rose Beige—medium tan; rose case (same as French Beige; Rose Nude)

Rose Cedar—tan with a rose cast

Rose Nude—medium tan with rose cast (same as Rose Beige; French Beige)

Rose Pink—pink with a rose cast

Rose Romantique—pink

Rosewood—reddish brown

Royal Blue—deep bright blue

Royal Purple—bright reddish purple

Rust—medium orange brown

Sand—pale beige

Sandalwood—medium golden brown

Sapphire Blue—medium blue with slight green cast

Scarlet—bright red

Sea Sand—light tan with gray cast (same as Beige)

Seal Brown—very deep dark brown

Seashell—very light pink

Shell Pink—bright pink with pale orange cast

Silver—light gray, color of silver

Silverwing—medium light gray

Singalee—light cocoa brown

Sky Blue—light blue

Sorrento—light blue with lavender cast

Spanish Yellow—very bright yellow

Spruce Green—medium bluish green (same as Chukker)

Steel—dark gray with blue cast

Strawberry—deep rose (same as Fraise)

Sulphur—pale greenish yellow

Sun Bronze Khaki—medium light khaki

Sunrise Red—light orange red

Suntan—light reddish tan

Talisman—darker shade of Cardinal

Tan—very light brown

Tan Heather—tan predominates with other contrasting colors mixed in

Tanbark Heather—medium brown predominates with contrasting colors mixed in

Tangerine—deep bright orange

Terra Cotta—medium brown orange

Tobacco Brown—very dark golden brown (same as Havana; Hula Brown)

Tomato—red orange (same as Paprika)

Topaz—deep golden tan

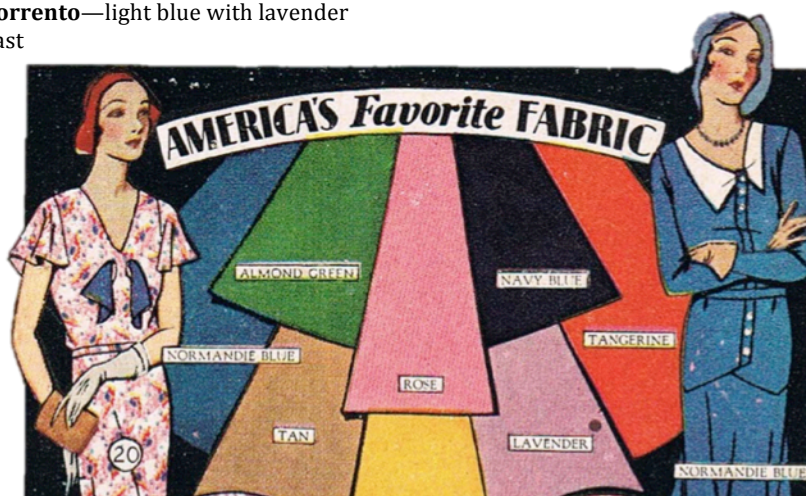
Turkey Red—bright red

Turquoise—light greenish blue

Waikiki—medium brown with slight yellow cast (same as Olive Brown)

Wine—reddish purple

Winetone—dark red with slight purple cast



COLORS USED IN DESCRIBING FOOTWEAR, HOSIERY, AND WEARING APPAREL ACCESSORIES

Almond—light grayish green
Almora—medium reddish brown
Amber—medium golden brown

Beaver—light brown with grayish cast
Blush—tan with pinkish cast

Camel—light grayish tan
Champagne—light pinkish beige
Copper—the color of copper
Cordovan—very dark brown
Cork—medium tan with rose cast

Maize—light yellow
Marine—light Navy Blue
Maroon—very dark red
Melon—pale pink orange
Misty Morn—dark taupe with rose cast
Mode—medium shade of tan
Mode Beige—very dark beige

Natural Tan—light tan
Nile Green—pale green
Nude—pinkish beige
Nut—dark tan

Orchid—pale pinkish violet

Cream—white with slight yellow cast

Deer Tan—dark beige

Eggshell—light pinkish cream

Flesh—very pale pink

French Beige—medium tan with rose cast

French Blonde—light beige

French Gray—light gray

French Nude—onionskin color

French Tan—dark tan

Oxford Gray—dark Gray

Peach—pale orange pink

Pongee Color—light tan

Powder Blue—light grayish blue

Putty Beige—dark beige

Rose Nude—medium tan with rose cast

Ruby—medium red with purple cast

Sable—medium grayish tan

Sand—pale beige

Sapphire—medium blue with slight green cast

Gold—yellow with olive cast

Gunmetal—very dark gray

Ivory—very light grayish tan

Jade—light green

Java—dark brown

Khaki—greenish brown

Linen Blue—light grayish blue

Scarlet Red—bright red

Sea Sand—light tan with gray cast

Sea Spray—light grayish green

Silver—light gray

Sky Blue—light blue

Slate Gray—dark bluish gray

Smoke—light tan with grayish cast

Suntan—light reddish tan

Tea Rose—pale pink with orange cast

Wine—reddish purple



Putty Beige



*The New
Sea Sand*

Spring Hosiery Shades 1931

Notice the descriptor suggests with which colors the hosiery would work.

<p>FRENCH TAN</p> <p><i>A dark tan. For very dark reds, black, navy, or dark blue.</i></p>			<p>GUNMETAL</p> <p><i>Our darkest shade after black. For black, dark blue. Indispensable on rainy days.</i></p>
<p>SUNTAN</p> <p><i>Deep rich tan. For black, brown, green, medium blue, red. Gives a noticeably tanned effect.</i></p>			<p>SILVER GRAY</p> <p><i>A medium gray. Smart for black-and-white costumes. Good with blues, grays, pale lavender.</i></p>
<p>MODE</p> <p><i>A medium tan, darker than Nude. Goes with all colors. Best with deeper shades.</i></p>			<p>ROSE NUDE</p> <p><i>Medium dark tan, with faint lavender cast. Good with black, and medium to dark colors.</i></p>
<p>NUDE</p> <p><i>Sand cast or natural tan. Goes with all colors. Best shade for vivid sports colors.</i></p>			<p>FRENCH BLONDE</p> <p><i>Light tan with pink tint. Goes well with medium light shades of blue, lavender, scarlet or rose.</i></p>
<p>EGGSHELL</p> <p><i>Soft, ivory color. For light tints and pastel party frocks.</i></p>			<p>FLESH</p> <p><i>Pale pink cream tint. Our lightest tone next to white.</i></p>

The Color Tables:

Armed with seven different catalogs from Sears, Roebuck and Co., Montgomery Ward and Co., and National Bellas Hess Co., all from 1928-1931, I endeavored to develop a table of the colors of the clothing available for purchase cross referenced with the age/size group for which it was sold. The following clarifications should be noted:

First, the tables were compiled using the clothing for daytime, sports wear, and house dresses. I did not address evening gowns. This is primarily because the catalogs I used did not showcase a lot of evening gowns. I can only surmise that either these were custom made to order or the women who were handy with the needle made their own.

I also did not address clothing for girls under the age of seven. Regarding children ages 2-6, it was noted that the dresses were sold in basic colors of pink, blue, yellow, green, lavender, peach, white, buff, powder blue, rose pink, and tan. Prints were identified as either "assorted prints" or "fancy prints."

Second, the sizes of clothing are divided into five categories based on age and chest or bust measurement: Miss, Junior Miss, Misses, Women and Misses, and Larger or Stout Women (the modern full figured woman). It is my opinion that the companies were trying to give options to cover all shapes and sizes. Sizing given in age years tend to be slimmer cut, with smaller arm openings and a narrower back measurement, as girls and teens tend to be more lean and lanky. Miss, Junior Miss, and Misses overlap in their age years. The styles between the three might have slight stylistic variances, but the main difference I saw was in chest or bust measurement. Junior Miss sizing was only available in the *Sears Roebuck and Co.* catalogs. The following chart shows specific measurements found in the two primary catalogs:

SEARS ROEBUCK AND CO. and MONTGOMERY WARD AND CO. 1928-1931

Length is measurement from back of neck to bottom of skirt

*Size only available from Montgomery Ward

Girls/Miss	Age 7-14	7	8	10	12	14	16*	Years		
	CHEST	26	27	29	31	33	36	inches		
	LENGTH	26	28	31	34	37	41	inches		
Junior Misses	Age 13-19	13	15	17	19	Years				
Sears ONLY	Bust	31	33	35	37	inches				
	Length 1928-29	37	38	38	39	inches				
	Length 1930-31	41	42	42	43	inches				
Misses	Age 14-22	14	16	18	20	22	Years			
	Bust	32	34	36	38	40	inches			
	Length 1928-29	37	38	38	39	40	inches			
	Length 1930-31	43	43	43	43	43	inches			
Women/Misses	Bust 34-44	34	36	38	40	42	44	Inches		
	Length 1928-29	39	40	41	41	42	42	inches		
	Length 1930-31	44	44	44	44	44	44	inches		
Larger Woman/Stout	Bust 39-53	39	41	43	45	47	49	51	53	Inches
	Length 1931	45	45	45	45	46	46	47	47	inches

Third, I have chosen to combine the colors found in 1928 and 1929 catalogs together, and those for 1930 and 1931 together. This was done for two reasons: space saving and catalog dates. Most of the colors within the sizes overlapped between the years, and many catalogs, particularly those for Fall/Winter, cross over into the following year.

Fourth, many of the colors listed may appear to be redundant, but I wanted to use the same descriptors found in the catalogs. When a name was listed that didn't self describe the color, I endeavored to include a description next to it. These descriptions were either listed in the catalog alongside the color name or as part of the fabric description, or were identified at the back of the catalog, as was the case for the colors listed in *Sears, Roebuck and Co*, Spring/Summer 1931.

Last, I have grouped the colors into nine different categories: solid colors, checks, gingham, plaids, tweeds, main background color with polka dots, main background color with prints, and main color with a contrasting trim in a solid color. I have also included a coat category, simply because the information was available. A few general observations became apparent while exploring the color options or once the table was complete:

- Solid colored garments were available all four years for all age/size groups.
- Prints were available in all four years, but seem to be more common in 1930-31.
- The prints in the later years tended to be more floral in nature, and most floral prints were small in size. However, a few were noticed where the flowers appear to be about the size of the palm of my hand.
- Plaids showed up more in the younger Miss group, ages 7-14.
- Surprisingly, I didn't see any mention of gingham dresses in 1930-31. Perhaps this was because most housedresses in 1930-31 sported a floral print. However, gingham fabric was still available for purchase by the yard.

The tables can be found on the following four pages. Although this project has turned out to be a time consuming endeavor, it gave me a much broader idea of just how colorful and expressive the Model A era truly was. It is my hope that this compilation of information into one place will help others in our hobby when choosing colors for their Model A era fashions.

References:

- National Bellas Hess Co., Inc.*, New York City, Summer Sale 1929.
Sears, Roebuck and Co., Catalog 162, Kansas City, MO., Spring/Summer, 1931.
Sears, Roebuck and Co., Catalog 159, Boston, MA., Fall/Winter, 1929/1930.
Montgomery Ward and Co., Kansas City, MO., Catalog 109, Fall/Winter, 1928/1929.
Montgomery Ward and Co., Kansas City, MO., Catalog 112, Spring/Summer, 1930.
Montgomery Ward and Co., Kansas City, MO., Catalog 114, Spring/Summer, 1931.
Montgomery Ward and Co., Albany, NY., Catalog 113, Fall/Winter, 1930/1931.



Available Colors for Apparel from Sears Roebuck and Co., Montgomery Ward Catalogs (MW), and National Bella Hess Co. by Age Group 1928-1931

		1928-29					1930-31				
		Miss Age 7-14	Junior Misses Age 13-19	Misses Age 14-20	Wome n and Misses Bust 34-44	Full Figured Woma Bust 39-53	Miss Age 7-14	Junior Misses Age 13-19	Misses Age 14-20	Wome n and Misses Bust 34-44	Full Figured Woma Bust 39-53
SOLID COLOR											
Black			X	X	X	X		X	X	X	X
Blue				X	X	X	X		X		
Blue-Light		X	X	X			X	X	X	X	
Blue-Medium		X	X	X			X	X	X	X	
Brandywine	burgundy red			X							
Brown		X	X	X	X	X			X		X
Brown-Dark	AKA English Brown				X			X	X	X	X
Brown-Med. Light					X	X					X
Brown-Medium	AKA Brown Sugar	X	X	X	X	X			X	X	X
Buff	medium tan yellow cast				X						
Byrd Blue	light blue	X	X	X							
Cactus Rose					X		X				
Cardinal Red	medium red	X					X				
Castillian Red	deep bright red		X					X			
Challenge	medium bright blue							X	X		
Chukker	medium bluish green								X	X	X
Cocoa	light brown of orange cast	X	X	X	X	X					
Copenhagen	AKA Copen Blue	X		X	X		X		X	X	
Coral Rose	deep rose	X	X				X				
Currant Red								X	X		
Dome Blue	light navy				X						
Eggshell	very light pinkish cream									X	
Forrest Green	dark green				X						
Fraise	deep rose			X	X	X		X		X	
French Beige	medium beige				X		X				
French Blue	medium blue								X		
Garland Green	medium light green	X	X	X							
Gascon	medium dark grayish blue								X	X	
Gold							X				
Gray						X					
Gray - Dark				X							
Green		X	X		X	X	X		X	X	
Green-Dark	aka English Green, Balsam			X	X			X	X	X	X
Green-Jade								X			
Green-Light		X						X	X		
Green-Medium		X	X	X	X		X	X	X	X	X
Guardsman Blue	medium navy								X	X	
Hawaiian	medium brown				X						
Honeydew	pale pink orange	X									
Hyacinth Blue	light blue w/ purple cast							X			
Independence	dark blue			X					X		
Larkspur	medium blue								X	X	
Lavender					X	X	X			X	X
Leafmold Brown	medium dark brown								X	X	
Linen	medium blue									X	
Madeira wine	amber or tawney red						X				
Maize	light yellow; same as Corn		X	X	X		X		X	X	
Marine	dark Copenhagen				X						
Marron Glace	cocoa tan, brn sugar		X	X	X	X				X	
Mauve								X			
Meadow	medium dark green								X	X	X
Monet	light copenhagen				X		X				
Navy Blue			X	X	X	X		X	X	X	X
Nile Green	pale green	X		X			X				
Orchid	pale pinkish violet		X	X	X	X			X	X	
Pale Pink				X							
Pastel Blue				X	X				X		
Pastel Green				X					X		
Peach			X	X	X				X		
Pistachio	light grayish green								X		
Purple Aster					X						
Red			X		X		X				
Red-Dark								X	X	X	

	1928-29					1930-31				
	Miss Age 7-14	Junior Misses Age 13-19	Misses Age 14-20	Wome n and Misses Bust 34-44	Full Figured Woma Bust 39-53	Miss Age 7-14	Junior Misses Age 13-19	Misses Age 14-20	Wome n and Misses Bust 34-44	Full Figured Woma Bust 39-53
SOLID COLOR (continued)										
Rose	X	X	X	X	X	X	X	X	X	
Rose - Deep								X	X	
Rose Beige		X	X	X		X		X	X	X
Rose Cedar								X	X	
Rose Red	X								X	
Rose Tan	X			X				X		
Rose-Light								X	X	
Rose-Medium	X						X		X	X
Rust	X									
Sea Sand							X	X		
Shagbark			X							
Singalee									X	X
Spanish Violet								X		
Sport Red						X				
Talisman							X			
Tan	X	X	X	X	X	X	X	X	X	X
Tan-Dark			X	X	X					X
Tan-Medium		X	X	X	X			X	X	X
Tan-Natural			X	X	X		X		X	X
Tangerine				X						
Treaty Green				X						
Turquoise Blue	X					X				
Waffle		X								
White	X	X	X			X		X	X	
White Oyster								X		
Wine		X	X				X	X	X	X
CHECK										
Black / Red check		X								
Black / White check	X			X		X			X	X
Blue / White check				X	X			X	X	X
Brown / Tan check										X
Green / White check									X	
Lavendar / White check			X	X						X
Navy Blue / Maize check		X								
Red / White check								X	X	
Rose /White check		X								
GINGHAM										
Black /white				X	X					
Blue / white	X			X	X					
Lavendar / white					X					
Red / white	X	X								
Rose / white	X	X								
PLAIDS										
Black / Silver Plaid										
Black w/ Silver Stripe					X					
Blue Plaid	X					X				
Brown Plaid	X					X				
Green Plaid	X									
Navy Blue Plaid	X									
Red Plaid	X					X				
Tan / Blue Plaid	X	X								
Tan Plaid	X					X				
TWEEDS AND TWEED PRINTS										
Green and Tan Tweed								X	X	
Navy and Red Tweed	X									
Tan and Brown Tweed	X	X	X	X				X	X	
MAIN BACKGROUND W/ POLKA DOTS										
Black w/ white dots					X	X				X
Blue w/ rose dots				X						
Blue w/ white dots						X				X
Brown w/ multicolored dots									X	
Brown w/ white dots									X	
Copenhagen Blue w/white dots									X	

	1928-29					1930-31				
	Miss Age 7-14	Junior Misses Age 13-19	Misses Age 14-20	Women and Misses Bust 34-44	Full Figured Woma Bust 39-53	Miss Age 7-14	Junior Misses Age 13-19	Misses Age 14-20	Women and Misses Bust 34-44	Full Figured Woma Bust 39-53
MAIN BACKGROUND W/ POLKA DOTS (continued)										
Green w/ multicolored dots				X						
Lavender w/ white dots					X				X	X
Navy Blue w/ multicolored dots				X					X	
Navy Blue w/ white dots					X	X	X	X	X	X
Tan w/ burgandy dots									X	
Tan w/ copen blue dots									X	
Tan w/ green dots			X	X						
Tan w/ red dots				X						
White w/ blue dots								X		
White w/ green dots									X	
White w/ multicolored dots			X							
White w/ red dots								X	X	
MAIN BACKGROUND COLOR W/ PRINTS										
Black and Tan print										X
Black and White print									X	X
Black w/ print			X	X				X	X	X
Blue and White print									X	
Brown and Tan print								X	X	X
Chukker w/ print									X	
Copenhagen Blue w/ print								X	X	X
Dark background w/assorted print									X	
Dark Blue w/ print								X		
Dark Brown w/ print									X	X
Dark Green w/ multicolored print								X	X	
Dark Green w/ print								X	X	X
Eggshell w/ multicolored print								X	X	
Gold w/ print						X (10-14)				
Gray w/ print				X						
Gray w/multicolored print								X	X	X
Lavender w/ print										X
Light background w/assorted print							X	X	X	
Light Blue w/ print	X							X	X	
Maize w/ print						X		X	X	
Medium Blue w/ print	X			X		X	X	X	X	X
Medium Green w/ print	X		X	X		X	X	X	X	X
Medium Brown w/ print			X	X			X	X	X	X
Navy Blue and Tan print								X		X
Navy Blue and White print									X	X
Navy Blue w/ print				X	X			X	X	X
Orchid w/ print						X				X
Pastel Blue w/ print	X					X		X	X	
Pastel Green w/print								X		
Pastel Rose w/ print	X							X	X	
Peach w/ print								X		
Red w/ print						X				
Rose w/ print						X		X	X	
Soft Green w/ print				X				X	X	
Tan w/ print		X	X	X	X	X		X	X	
Tangerine w/ print				X				X	X	
White w/ blue print	X	X		X				X		
White w/ multicolored print		X					X	X	X	
White w/ orchid print				X						
White w/ pastel print							X			
White w/rose print	X	X		X			X	X		
MAIN COLOR W/CONTRASTING TRIM IN A SOLID COLOR										
Black w/ beige				X	X					X
Black w/ coral									X	
Black w/ eggshell									X	X
Black w/ green		X								
Black w/ light blue			X							
Black w/ Nile green								X		
Black w/ rose			X	X						
Black w/ tan				X	X					
Black w/ white				X	X		X			
Blue w/ rose				X						
Blue w/ tan	X		X	X						

		1928-29					1930-31				
		Miss Age 7-14	Junior Misses Age 13-19	Misses Age 14-20	Wome n and Misses Bust 34-44	Full Figured Woma Bust 39-53	Miss Age 7-14	Junior Misses Age 13-19	Misses Age 14-20	Wome n and Misses Bust 34-44	Full Figured Woma Bust 39-53
MAIN COLOR W/CONTRASTING TRIM IN A SOLID COLOR (continued)											
Brown w/ tan				X		X					
Brown w/eggshell								X		X	
Castilian w/ eggshell	very bright red						X				
Chukker w/ white	medium bluish green						X			X	
Copenhagen Blue w/ tan	medium light grayish blue	X			X						
Dark Brown w/copper								X			
Dark Brown w/peach						X			X		
Dark Red w/ tan								X			
Green w/ natural		X									
Green w/ tan					X						
Maroon Glace w/ tan	light brown with rose cast			X	X	X					
Navy Blue w/ beige					X					X	
Navy Blue w/ eggshell							X		X	X	
Navy Blue w/ red		X	X	X			X				
Navy Blue w/ silver or gray					X	X			X		
Navy Blue w/ tan			X		X	X					
Navy Blue w/ white								X			
Navy w/ Shell Pink								X			
Orchid w/ white									X		
Red w/ natural		X									
Red w/ navy		X	X								
Red w/ tan					X						
Rose Beige w/ tan			X								
Rose w/ blue		X									
Tan w/ brown			X				X				
Tan w/ green					X	X					
Tan w/ red		X									
Tan w/ rose					X						
White w/ medium green									X		
White w/ red								X			
Wine w/ tan				X							
Yellow w/ leather brown							X				
COAT COLORS											
Admiral	medium dark navy										
Black			X	X	X	X		X	X	X	
Black and White check							X				
Brown		X			X	X					
Burma Tan	dark beige						X	X	X	X	
Chukker	medium bluish green							X			
Copenhagen Blue	medium light grayish blue	X					X				
Cranberry Red					X						
Dark Brown					X	X					
Gascon Blue	medium dark grayish blue						X	X			
Grackle Blue	bright medium blue	X	X	X	X	X					
Gray				X	X	X					
Green			X	X							
Guardsman	medium navy							X	X	X	
Leaf	light green								X		
Light Brown			X	X		X					
Light Navy Blue	aka Middy Blue	X	X	X	X						
Light Tan									X		
Medium Tan								X	X		
Navy Blue		X	X	X	X	X		X	X	X	
Powder Blue		X	X	X							
Red		X					X				
Reindeer Brown	medium brown	X	X	X	X	X					
Reindeer Tan	medium grayish dark tan	X	X	X	X	X		X	X		
Singalee	medium brown									X	
Talisman	medium dark red							X			
Taupe						X					
Tweed	Tan		X	X			X	X	X	X	
Tweed	Gray			X							
Tweed Fleck	rose tan						X				
Tweed Fleck	medium green						X	X			
Wine		X		X							

#####